

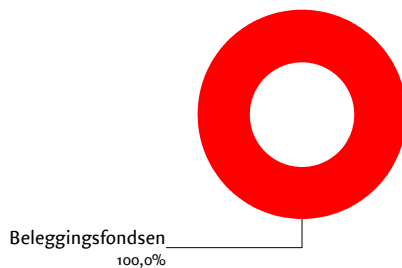
### Fund Profile

Zwitserleven PPI iShares Government Bond Index Fund ('Fund') solely invests in iShares Euro Government Bond Index Fund (Underlying Fund). The Underlying Fund seeks to achieve a total return on investment through a combination of capital growth and income, reflecting the performance of the FTSE Euro Government Bond Index, the reference index. The Underlying Fund invests primarily in the fixed income securities (such as bonds) that make up the index. Additionally, the Fund may temporarily maintain a cash position.

### Key Information as of 31 maart 2026

Risk Indicator	Lower risk	<b>1</b>	2	3	4	5	6	7	Higher risk
Inception Date	18-08-2025								
Obtainable Via	Verzekeringen van Zwitserleven								
Dividend	The fund does not pay dividend								
Benchmark	FTSE Euro Government Bond Index								
Accession/Withdraw	Daily subscription and redemption can take place at the net asset value of the fund in accordance with the conditions of your pension plan								

### Sectors



### Holdings (top 5)



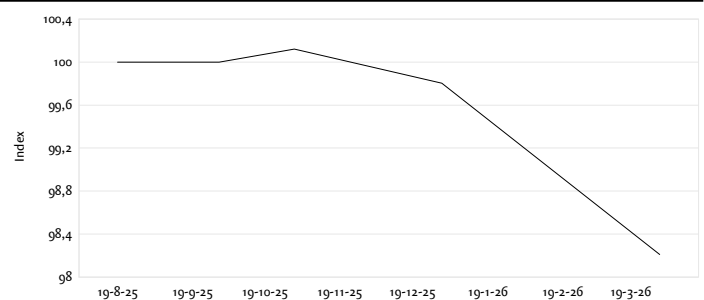
### Prices (Euro) and Facts

Net Asset Value End of Month	49,11
Highest price 12 months	50,87
Lowest price 12 months	49,11
Fund size x1 mln	0,00
Outstanding participations	20
Net asset value end of month	49,11

### Net Performance 31 maart 2026

1 month	-3,17%
3 months	-1,58%
Since start 31-12-2025 (YTD)	-1,58%

### Price Index Fund



### Ongoing Charge Figure (OCF)

	2024	Expected 2025
OCF <sup>2</sup>	0,13%	0,13%